


18-200mm F/3.5-6.3   
for Canon/Nikon/Sony

**TAMRON**  
New eyes for industry



One lens brings all of life's  
treasures into focus.

# 18-200mm

F/3.5-6.3 Di II VC

Model B018

Tamron introduces the versatile, all-in-one™ zoom for hobby, home and travel.

Di II lens designed exclusively for APS-C sized digital SLR cameras. Comes with lens hood.

Compatible mounts: Canon, Nikon, Sony\*\*

\* Among 18-200mm interchangeable lenses for APS-C DSLR cameras with O.I.S. (As of June 2015. Source: Tamron)

\*\* The Sony mount version does not include VC because Sony DSLR bodies incorporate built-in image stabilization.



World's  
lightest\*  
400g

[www.tamron.co.uk](http://www.tamron.co.uk)



Focal length: 18mm · Exposure: F/5.6 1/125 sec · ISO400 · © Thomas Kettner



Focal length: 18mm · Exposure: F/3.5 1/40 sec · ISO800 · © Thomas Kettner

## Covering focal lengths from 18 to 200mm, this compact zoom allows you to take great shots in a wide variety of situations.

Tamron introduces a lens made for capturing everyday life and special occasions with a smile. The 18-200mm VC is the culmination of our persistent efforts to perfect the high-power zoom lens category since 1992. This innovative lens is lightweight, high quality and ideal as a beginner's first interchangeable lens – or a casual user's **only** lens.

### World's lightest at 400g.

Comfortable to carry – even all day.

### New high-performance AF drive module.

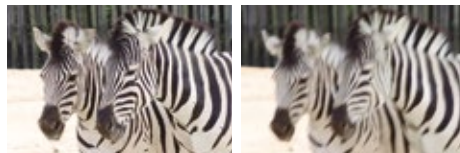
A newly designed autofocus drive module with optimal DC motor-gear train integration makes AF faster, quieter and more precise.

### Frame shots instantly – no need to change lenses.

Covers the zoom range you need for everyday shots, providing the flexibility to take group photos in tight spaces or make distant subjects appear closer – all with just one lens.

### VC (Vibration Compensation) for sharp handheld shooting.

Shoot handheld in situations where others need a tripod. Telephoto and night shots are prone to camera shake, but VC works to keep photos sharp and clear.



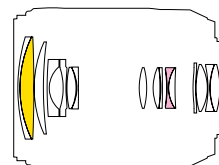
Focal length: 200mm  
Exposure: F/11  
1/20 sec

■ 18-200mm F/3.5-6.3 Di II VC for Canon, Nikon ■ 18-200mm F/3.5-6.3 Di II for Sony ■ Di II lens designed exclusively for APS-C sized digital SLR cameras. Model: B018

Model	B018
Focal Length	18-200mm
Maximum Aperture	F/3.5-6.3
Angle of View (diagonal)	75°33'-7°59'
Optical Construction	16 elements in 14 groups
Minimum Object Distance	0.49-0.77m (depending on focal length)
	18mm: 0.5m
	35mm: 0.77m
	180mm: 0.49m
	200mm: 0.5m

Max. Magnification Ratio	1:4 (at f=200mm: MOD 0.5m)
Filter Size	Ø 62mm
Maximum Diameter	Ø 75mm
Length <sup>*1</sup>	for Canon 96.6mm* for Nikon 94.1mm* 400g*
Weight	400g*
Aperture Blades	7 (circular diaphragm) <sup>**</sup>
Minimum Aperture	F/22-40
Standard Accessories	Flower-shaped lens hood, Lens caps
Compatible Mounts	Canon, Nikon, Sony <sup>**3</sup>

**B018 Optical Construction**  
■ Hybrid Aspherical Element  
■ LD Element



Specifications, appearance, functionality, etc. are subject to change without prior notice.  
<sup>\*</sup>Length and weight are based on figures for the Canon and Nikon-mount lens.  
<sup>\*1</sup> Length is the distance from the front tip of the lens to the lens mount face.

<sup>\*\*2</sup> The circular diaphragm stays almost perfectly circular up to two stops down from maximum aperture.  
<sup>\*\*3</sup> The Sony mount version does not include VC because Sony DSLR bodies incorporate built-in image stabilization.

**⚠ Caution:** Please read the instruction manual carefully before using the lens

UK 08/2015

**TAMRON®**

Manufacturer of precise and sophisticated optical products for a broad range of industries.

#### TAMRON UK

Imported into UK and Ireland by Intro 2020 Ltd, Priors Way, Maidenhead, Berkshire SL6 2HP  
 Tel: 01628 674411 Fax: 01628 771055  
 sales@intro2020.co.uk, www.tamron.co.uk



#### Management on Quality and Environment

Tamron is certified with international standards: ISO 9001 for quality and ISO 14001 for environmental management at its headquarters, domestic sales offices, China plant as well as its three production facilities in Aomori, Japan, and is fully committed to striving for continued and sustainable improvement at all levels and facets of its business operations.

Note: Information valid as of June 2015. Information in this publication is subject to change at any time without prior notice.